

# State of Knox Report 2024



# Table of Contents

<b>Knox Community Profile</b>	<b>3</b>
<b>Environment</b>	<b>6</b>
<b>Housing</b>	<b>10</b>
<b>Moving Around</b>	<b>14</b>
<b>Safety</b>	<b>16</b>
<b>Economy, Employment and Learning</b>	<b>20</b>
<b>Health and Wellbeing</b>	<b>22</b>
<b>Social Inclusion</b>	<b>26</b>
<b>Decision Making</b>	<b>28</b>
<b>Data Sources</b>	<b>30</b>

# Knox Community Profile

## Who we are

# 161,766

individuals call Knox home.<sup>1</sup>

# 40

is the median age.<sup>2</sup>



# 33%

of residents were born overseas.<sup>3</sup>



# 6%

of people require assistance in their day-to-day lives due to disability.<sup>4</sup>



# 29%

speak a language other than English at home.<sup>5</sup>



# Knox Community Profile

## How we live

# 61,950

dwellings in Knox,<sup>6</sup>  
 2,865 more than 2016.<sup>7</sup>

## 82%



of dwellings  
 are single detached  
 houses.<sup>8</sup>

## 17%



of dwellings are  
 medium to high  
 density.<sup>9</sup>

## 21%



of people in  
 Knox live by  
 themselves.<sup>10</sup>

## 48%



Households are  
 families with one  
 or more children.<sup>11</sup>



# How we work and learn

# 30%

of employed people live and work in Knox.<sup>12</sup>

# 28%

of people have a bachelors degree or higher.<sup>13</sup>



# 80%

of people travel to work in a private car.<sup>14</sup>



**More Knox residents work in health care and social assistance than any other industry.**

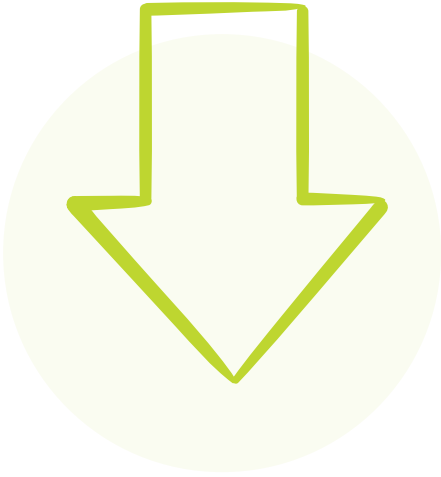
## Environment

Greenhouse gas emissions in Knox are higher than the Eastern Alliance for Greenhouse Action (EAGA) average.<sup>15</sup>



**Knox**  
**14.6**

**EAGA**  
**11.0**



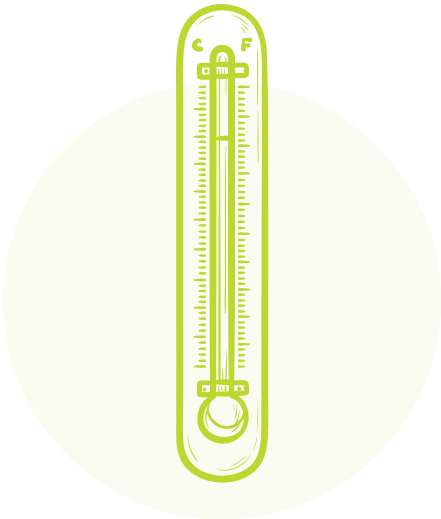
The decline in waste generation from 2021 to 2022 was

**8kg**  
per household.<sup>16</sup>



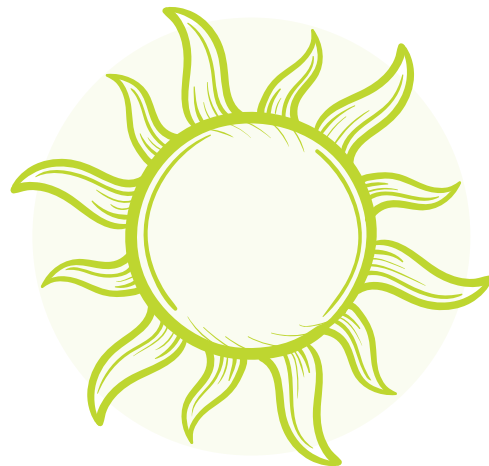
**1 in 4**

Houses has solar installations.<sup>17</sup>



**1.2°**

Celsius increase in average annual temperature in Knox between 1965 - 2023.<sup>18</sup>



**5 days**

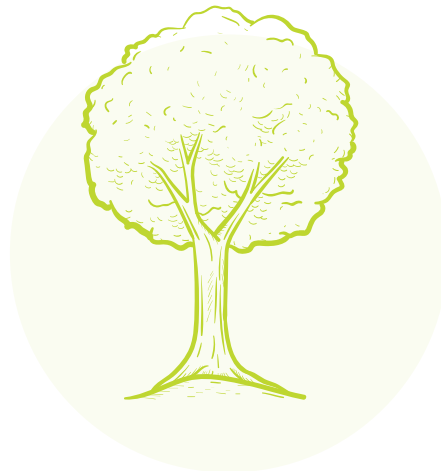
over 35° Celsius locally in 2023, including 0 days of 40°+<sup>19</sup>

# Environment



**77%**

of Knox dwellings are within 400m of open space compared to the metropolitan average of 76%.<sup>20</sup>



**18%**

of Knox's total area is under tree canopy cover compared to the metropolitan average of 16% and the Eastern Region average of 27%.<sup>21</sup>

Knox's biodiversity programs have re-vegetated

**24 hectares**

of land in Knox since 2009.<sup>22</sup>





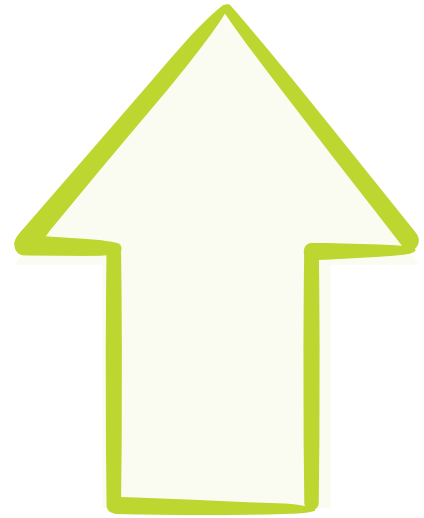




# Housing

# 61,950

dwellings in Knox,  
 2,865 more than 2016.<sup>23</sup>



# 82%

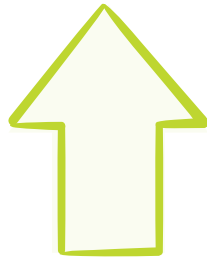
of dwellings are single  
 detached houses compared  
 to 84% in 2016.<sup>26</sup>



# 1 in 6

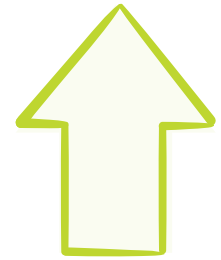
dwellings are an apartment,  
 unit or terrace, compared to  
 1 in 8 in 2011.<sup>27</sup>

# 43%

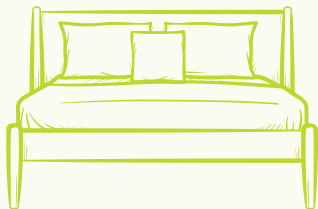


Ten year increase in Knox median household income to 2021, the same as for Greater Melbourne.<sup>24</sup>

# 96%



Ten year increase in Knox median house price to 2021, compared to 78% for Greater Melbourne.<sup>25</sup>



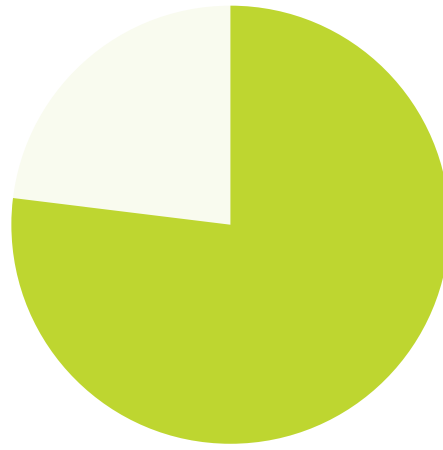
# 8 in 10

households in Knox have at least one spare bedroom in 2021.<sup>28</sup>



# Housing

77%



The proportion of the social housing need that can be met with existing local social housing and affordable private rentals in 2021.<sup>29</sup>



430

The estimated number of homeless people in Knox.<sup>30</sup>



12%

The estimated increase in homelessness in Knox from 2016.<sup>31</sup>

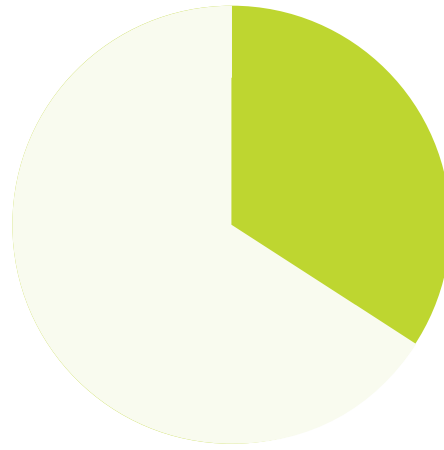






# Moving Around

# 38%

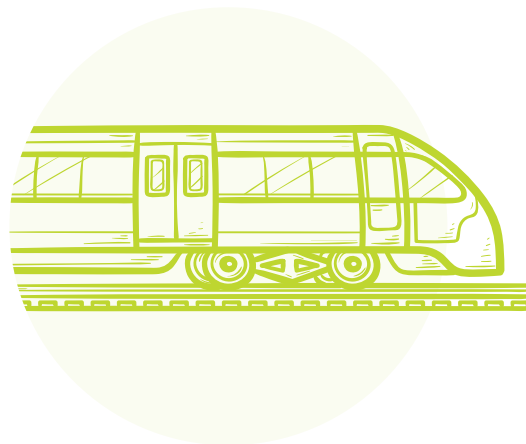


of Knox households within 400m of regular public transport compared to the metropolitan average of 49%.<sup>32</sup>



# 84%

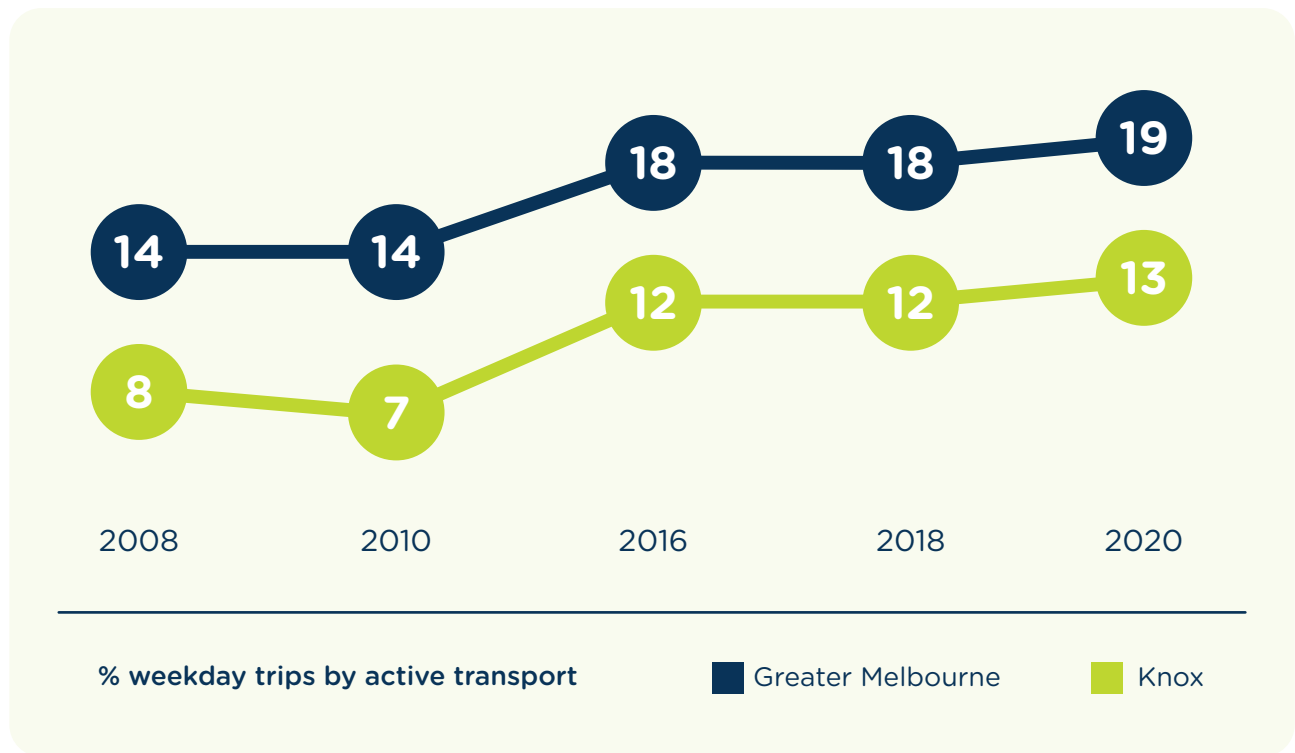
of travel on a weekend day in Knox is by car, 7% more than the Melbourne average. Weekend car use has reduced by 10 percentage points since 2010.<sup>33</sup>



# 6%

is the average percentage of weekday trips by public transport, up from 5% in 2010.<sup>34</sup>

Walking and cycling is increasing in Knox but remains lower than Greater Melbourne.<sup>35</sup>



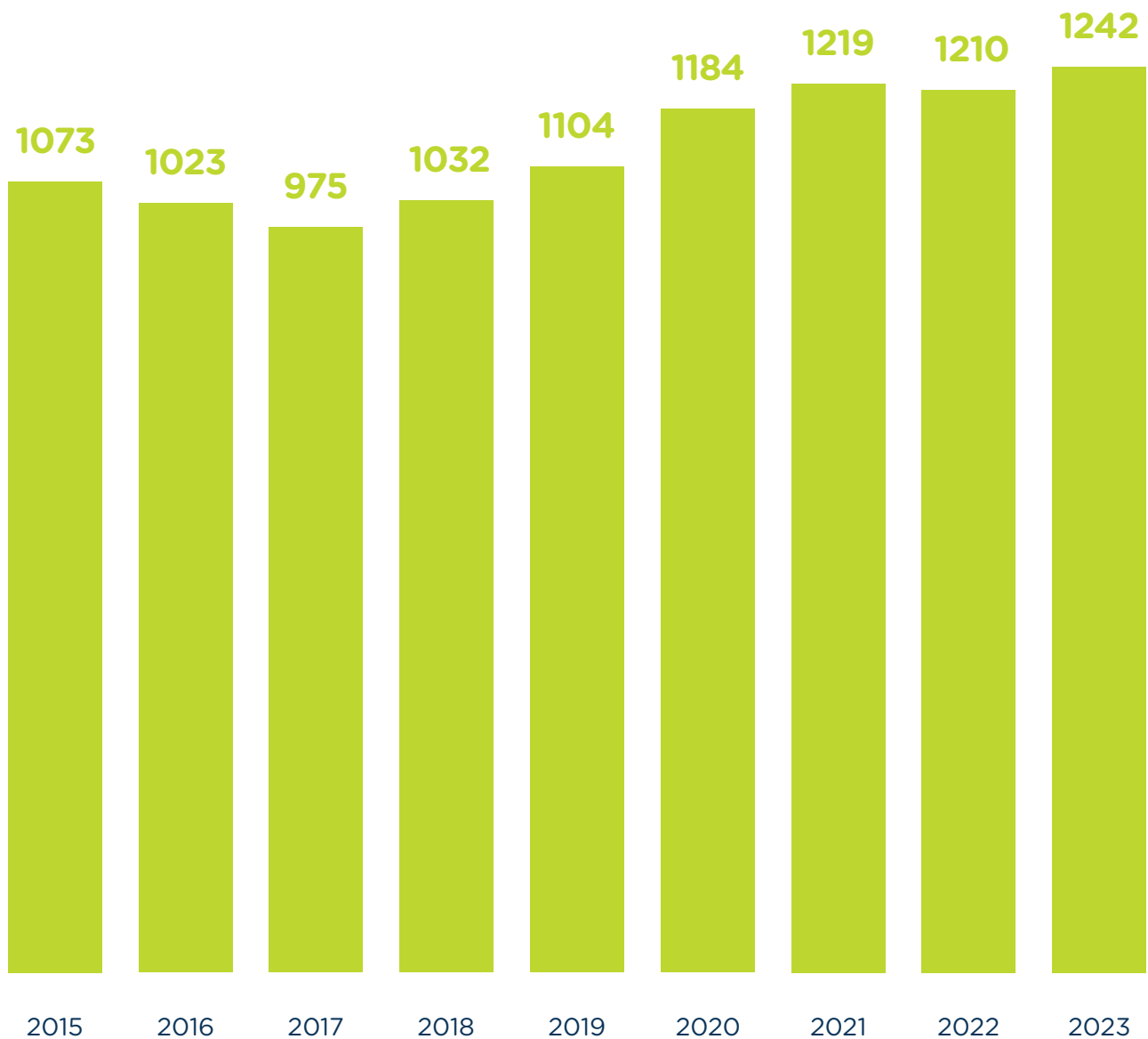
Weekend walking and cycling are less prevalent in Knox than Melbourne.<sup>36</sup>



% weekend trips by active transport

# Safety

The rate of reported family violence incidents in Knox has started an upward trend.<sup>37</sup>



Number of reported family violence incidents per 100,000 population



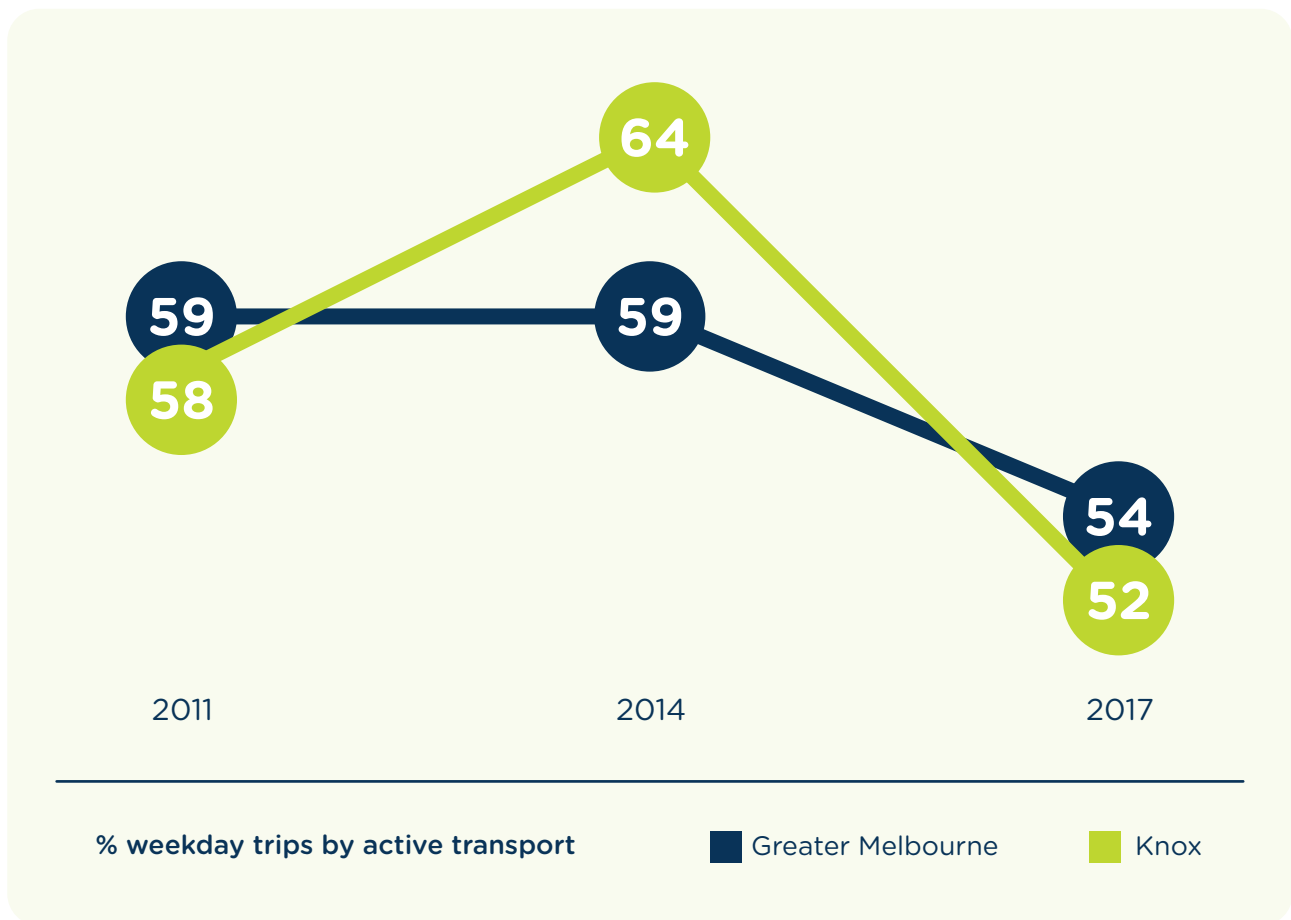
Of the 10,160 crime incidents in Knox in 2023 more than half were property related.<sup>38</sup>



The rate of drug related crime is higher in Knox with 655 incidents per 100,000 population compared to the Melbourne average of 424 in 2023.<sup>39</sup>

# Safety

Perceptions of safety are declining.<sup>40</sup>



34% of women that feel safe in their neighbourhood at night compared to 71% of men.<sup>41</sup>





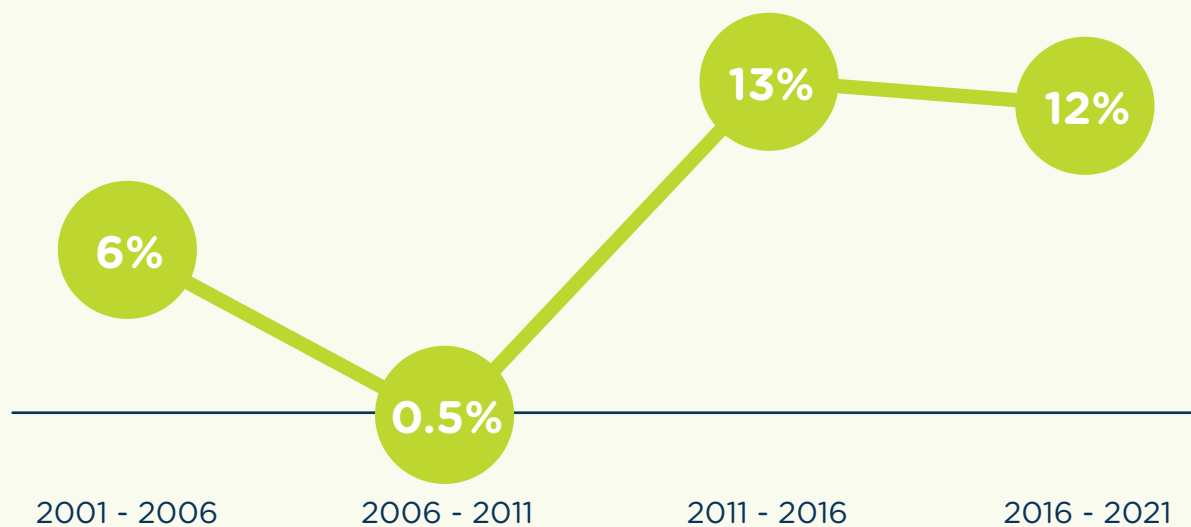


# Economy, Employment and Learning

# 74,184

Total jobs in Knox<sup>42</sup>

Jobs growth is holding steady in Knox.<sup>43</sup>



Change in number of people employed within Knox's boundary

■ Knox



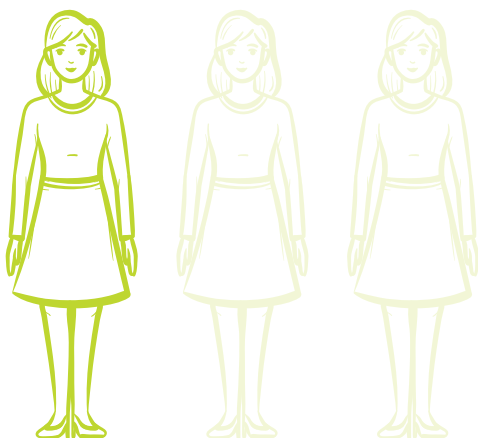


Knox has a high rate of youth engagement with 79% of youth fully engaged in work or study. However this decreased by 2% since 2011.<sup>44</sup>

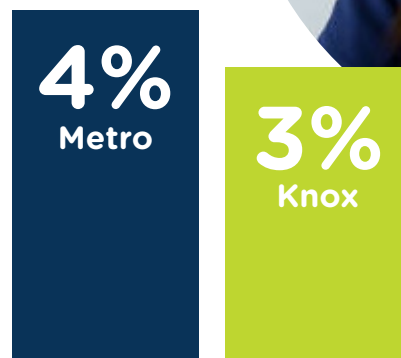


12% of school leavers aged 15 - 24 left school early in 2006 compared to 6% in 2021.<sup>45</sup>

**More Knox residents now work in health care and social assistance, prior to 2016 more residents had worked in manufacturing.**<sup>46</sup>



Nearly one third of employed people live and work in Knox. More Knox residents now work part time (+3% since 2011).<sup>47</sup>



**Sept 2023**

Unemployment in Knox is below the metropolitan Melbourne average.<sup>48</sup>

# Health and Wellbeing

# 50%

of adults undertake adequate physical activity to meet the national guidelines.<sup>49</sup>



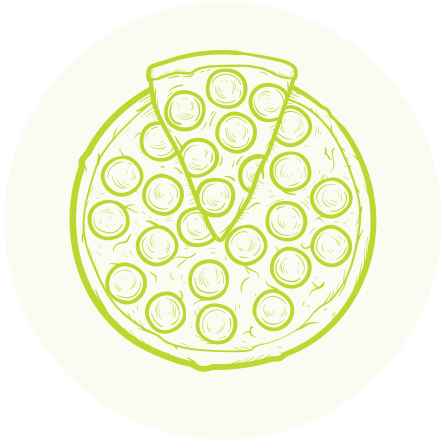
# 41%

of adults rate their health as very good or excellent in 2020, compared to 38% in 2014.<sup>50</sup>



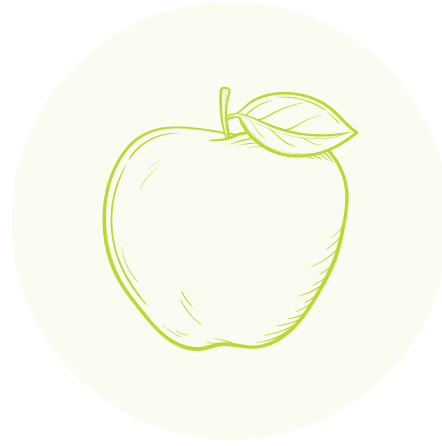
# 20%

of adults are smokers, up from 13% in 2014.<sup>51</sup>



# 45%

of adults are overweight or obese in 2020 down from 49% in 2008 and lower than the metropolitan average of 49%.<sup>52</sup>



# 56%

of Knox residents do not meet the daily recommendation for fruit & vegetables, up from 49% in 2014 and higher than the metropolitan average of 51%.<sup>53</sup>



# 60%

of adults are at increased lifetime risk of alcohol related harm, an increase of 3 percentage points from 2014.<sup>54</sup>



# 45%

At increased risk of alcohol related injury on a single occasion.<sup>55</sup>





**26%**

Agreed that 'getting drunk every now and then is OK.'<sup>56</sup>



**61%**

of children aged 0 - 6 years are developmentally 'on track' in all domains, 3% higher than the Greater Melbourne average.<sup>57</sup>



**95%**

of children in Knox aged 5 years are fully immunised.<sup>58</sup>



**23%**

of young people in Outer Eastern Melbourne have depressive symptoms.<sup>59</sup>



**56%**

of students are resilient.<sup>60</sup>



**28%**

of adults suffer from psychological distress, up from 18% in 2017. This is higher than the metropolitan average of 24%.<sup>61</sup>



**31%**

The proportion adults in Outer Eastern Melbourne with poor mental health was significantly higher in women than men.<sup>62</sup>

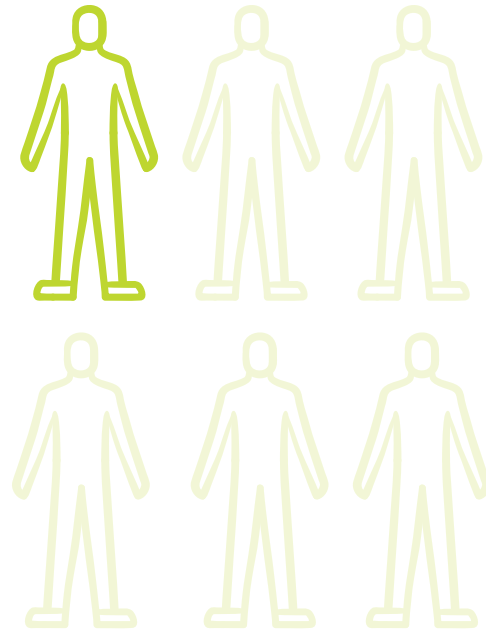


**20%**

# Social Inclusion

# 1 in 6

adults in Knox believe that most people can never or often not, be trusted.<sup>63</sup>



# 1 in 3

adults in Knox volunteers.<sup>64</sup>

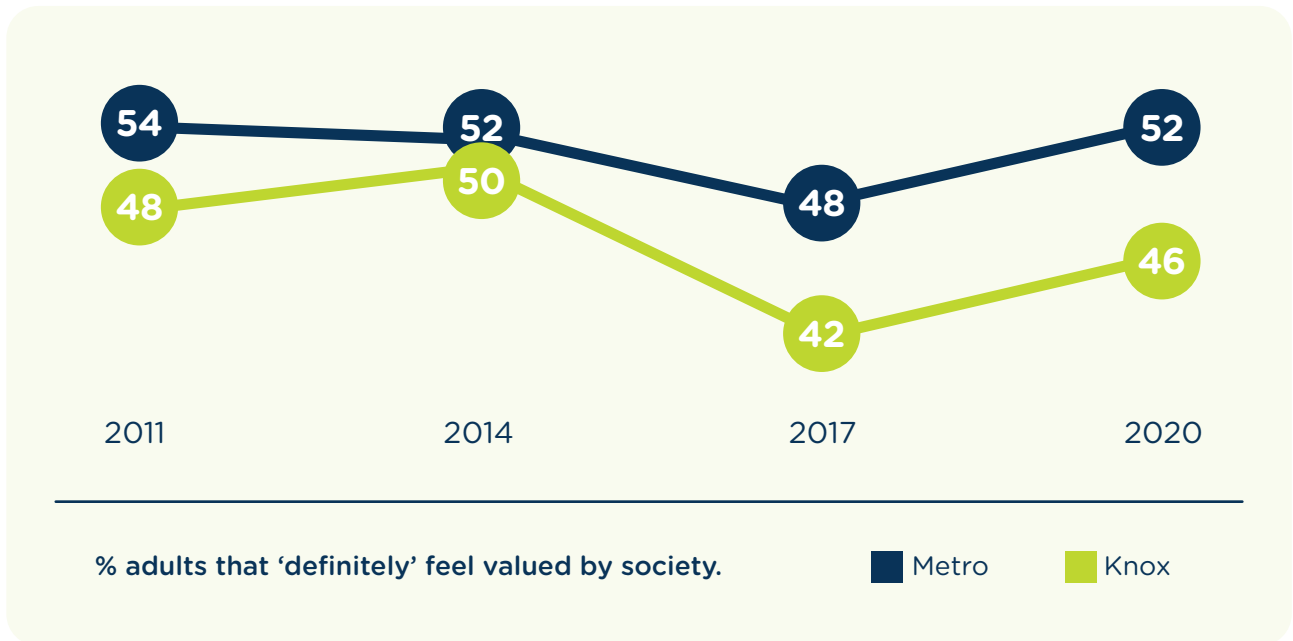


# 1 in 3

Adults in Knox show low support for gender equity in relationships. This result aligns with the state average of 36%.<sup>65</sup>

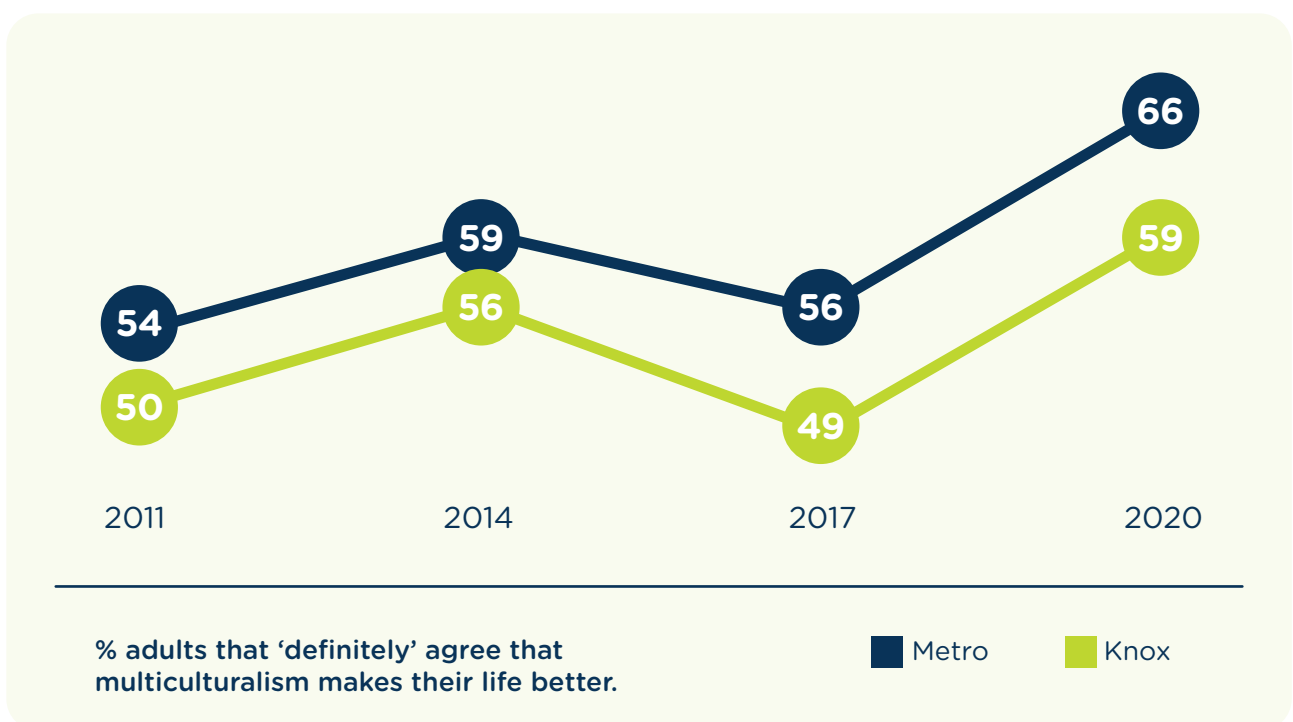


**46%** of people in Knox feel valued by society compared to 50% in 2014.<sup>66</sup>



**51%** had attended a local community event in the past 6 months.<sup>67</sup>

**59%** of adults definitely believe that multiculturalism makes their life better, up from 49% in 2017.<sup>68</sup>



# Decision Making

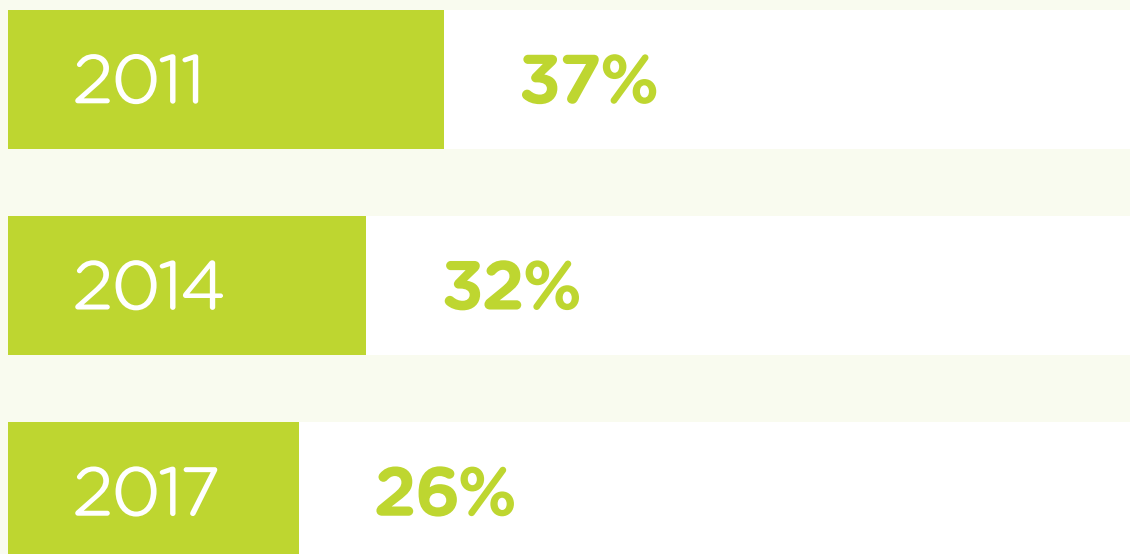


# 1 quarter

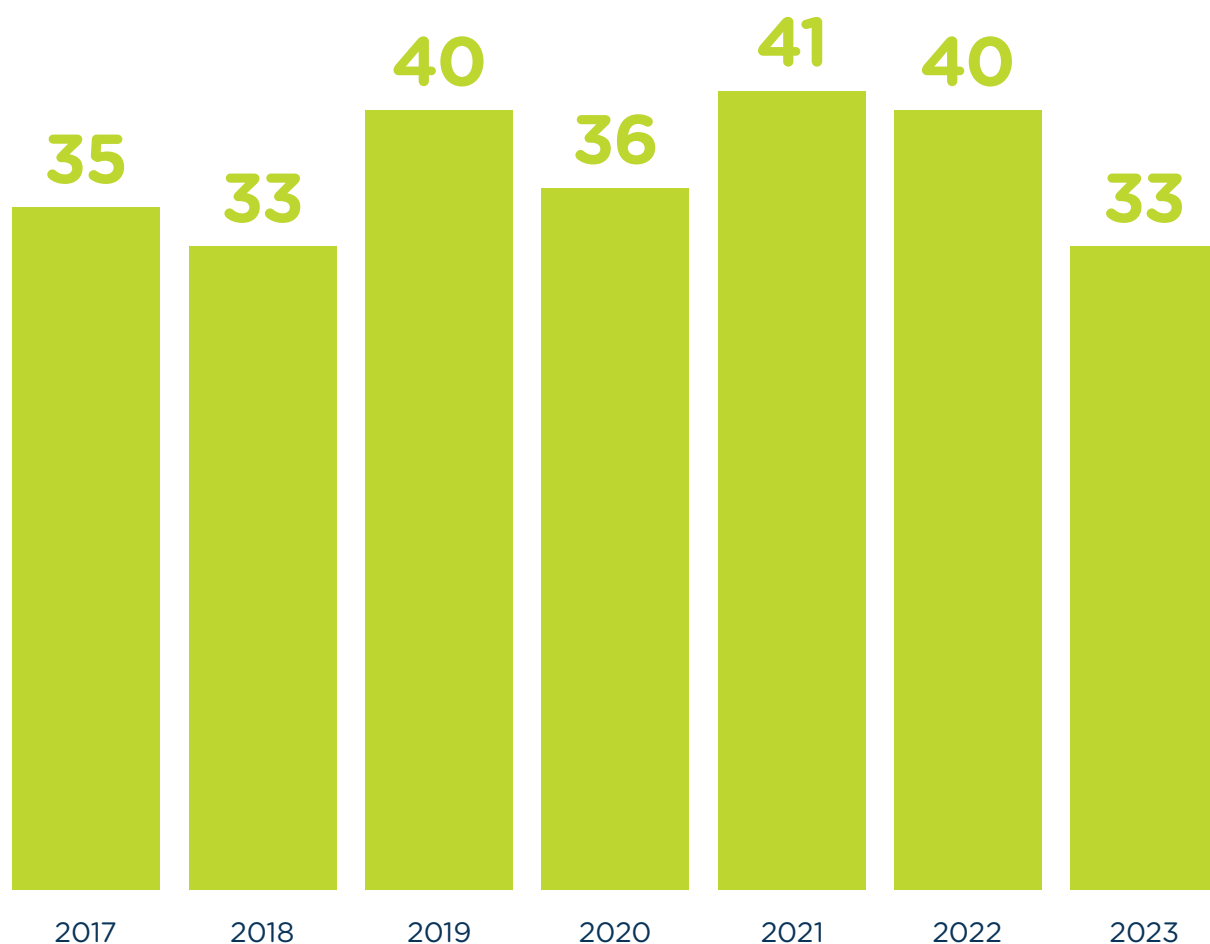
of adults feel there are opportunities to have a real say on matters that are important to them compared to 37% in 2011.<sup>69</sup>

**40%** the percentage of adults think Council is good or very good at keeping the community informed.<sup>70</sup>

% adults that definitely agree there are opportunities to engage on issues that are important to them.<sup>71</sup>



The percentage of adults rating Community engagement as good or better fell by 7 percentage points from 2022 to 2023.<sup>72</sup>



% adults rating Council engagement as 'very good' or 'good' <sup>73</sup>



# Data Sources

## 'Knox in 2024' Summary of the State of Knox Report 2024

### Knox Community Profile

#### Who we are

- (1) Australian Bureau of Statistics, Regional Population Growth, Australia (3218.0) (Estimated Resident Population 2023)
- (2) Australian Bureau of Statistics, Census of Population and Housing 2021
- (3) As above
- (4) As above
- (5) As above
- (6) As above
- (7) As above
- (8) As above
- (9) As above
- (10) As above
- (11) As above

#### How we work and earn

- (12) Australian Urban Observatory, RMIT University, [auo.org.au](http://auo.org.au). % of employed people living and working in the same local area (SA3), 2021
- (13) Australian Bureau of Statistics, Census of Population and Housing 2021
- (14) Victorian Integrated Survey of Travel and Activity (VISTA) LGA Profiler, Department of Transport, 2020

#### Environment

- (15) CO2 Emissions. Snapshot Climate-Australian Emissions Profiles, 2021
- (16) Recycling Victoria, Victorian Local Government Waste Data Dashboard, 2022
- (17) Australian PV Institute (APVI). Solar PV Status, 2024
- (18) Bureau of Meteorology, Scoresby Weather Station/Research Institute data, 2023
- (19) As above
- (20) Australian Urban Observatory, RMIT University, [auo.org.au](http://auo.org.au), % homes within 400m of public open space (any size), 2021

- (21) Urban Vegetation Cover Change in Melbourne 2014-2018, Centre for Urban Research, RMIT University, 2019
- (22) Green Spaces and Environment Department, Knox City Council, 2024

#### Housing

- (23) Australian Bureau of Statistics, Census of Population and Housing, 2021
- (24) Australian Bureau of Statistics, Census of Population and Housing, 2021
- (25) A Guide to Property Values, Valuer-General Victoria, 2021
- (26) Australian Bureau of Statistics, Census of Population and Housing, 2021
- (27) As above
- (28) As above
- (29) Knox City Council, Minimum Supply of Social Housing Analysis - Knox, 2021
- (30) Australian Bureau of Statistics Estimating Homelessness, 2021
- (31) As above

#### Moving around

- (32) Australian Urban Observatory, RMIT University, [auo.org.au](http://auo.org.au), % households within 400m of regular public transport, 2021
- (33) Victorian Integrated Survey of Travel and Activity (VISTA) LGA Profiler, Department of Transport, 2020
- (34) As above
- (35) As above
- (36) As above

#### Safety

- (37) Crime Statistics Agency, 2023
- (38) As above
- (39) As above
- (40) Department of Health, Victorian Population Health Survey, 2017
- (41) As above

## **Economy, employment and learning**

- (42) REMPLAN, 2023
- (43) Australian Bureau of Statistics, Working Population Profile, 2021. Change in number of people employed within Knox boundary.
- (44) Australian Bureau of Statistics, Census of Population and Housing, 2021
- (45) Australian Bureau of Statistics, Census of Population and Housing, 2021
- (46) Australian Bureau of Statistics, Census of Population and Housing, 2021
- (47) Australian Bureau of Statistics, Census of Population and Housing, 2021
- (48) REMPLAN, September quarter, 2023

## **Health and wellbeing**

- (49) Department of Health, Victorian Population Health Survey, 2017
- (50) Department of Health, Victorian Population Health Survey, 2020
- (51) Department of Health, Victorian Population Health Survey, 2020
- (52) Department of Health, Victorian Population Health Survey, 2020
- (53) Department of Health, Victorian Population Health Survey, 2017
- (54) As above
- (55) As above
- (56) VicHealth, VicHealth Indicators Survey, 2015
- (57) Australian Early Development Census, 2021
- (58) Department of Health, Australian Immunisation Register, 2022
- (59) Department of Education & Training, Victorian Student Health & Wellbeing Survey (VAMS online portal), 2018
- (60) City of Knox, Youth Resilience Survey, 2021 (Years 3-12)
- (61) Department of Health, Victorian Population Health Survey, 2020

- (62) As above
- (63) Department of Health, Victorian Population Health Survey, 2020
- (64) Department of Health, Victorian Population Health Survey, 2017
- (65) VicHealth, VicHealth Indicators Survey, 2015
- (66) Department of Health, Victorian Population Health Survey, 2020
- (67) Department of Health, Victorian Population Health Survey, 2014
- (68) Department of Health, Victorian Population Health Survey, 2020
- (69) Department of Health, Victorian Population Health Survey, 2017
- (70) Department of Government Services, Local Government Satisfaction Survey, 2023
- (71) Department of Health, Victorian Population Health Survey, 2017
- (72) Department of Government Services, Local Government Satisfaction Survey, 2023
- (73) As above



**For any queries please call  
the Civic Centre on  
9298 8000 or email  
[communityplan@knox.vic.gov.au](mailto:communityplan@knox.vic.gov.au)**



**Knox City Council**

511 Burwood Highway  
Wantirna South VIC 3152

Phone: 9298 8000

Email: [knoxcc@knox.vic.gov.au](mailto:knoxcc@knox.vic.gov.au)

Online: [knox.vic.gov.au](http://knox.vic.gov.au)

 Interpreter: 131 450

National Relay Service: 133 677